

Appendix E

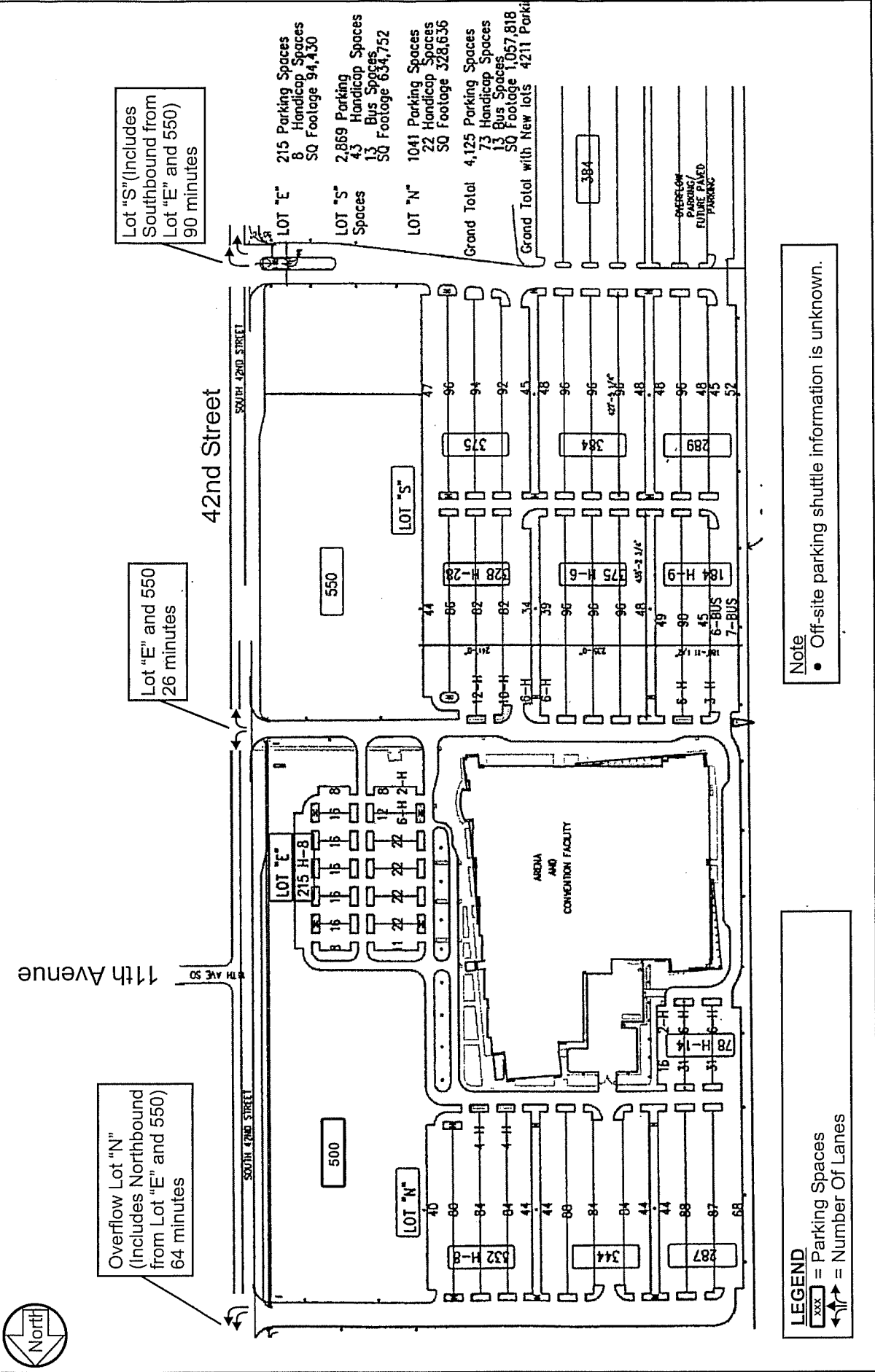
Summary of Interim Plans



SUMMARY OF INTERIM TRAFFIC PLAN

Facilities at the Alerus Center site are expanding to include the Canad Inn Hotel and Entertainment Complex. While the Canad Complex is being built, the number of available parking spaces, access to the Alerus Center site, and on-site traffic circulation will change. The Alerus Center requested an interim traffic management plan that accounts for these changes. A summary of the key issues of the interim plan include the following:

- 42nd Street/11th Avenue Access Driveway – All scenarios assume the curb is removed and an Alerus Center driveway is constructed at the intersection of 42nd Street and 11th Avenue. The driveway addition would make the existing intersection a four-leg intersection. The interim plan assumes the driveway is open only during Alerus Center events. The use of 11th Avenue will be for shuttle circulation for inbound and outbound traffic and for emptying approximately 550 parking spaces for general events up to 900 parking spaces for UND football events. A decision will have to be made regarding permanent use of an 11th Avenue Access to the Alerus.
- Event Types – The plan assumes two types of events: a general event (under 8400 attendees) and a UND football game (or event over 8400).
- Loss of On-site Parking Spaces – The Alerus Center will lose approximately 900 parking spaces due to the addition of the Canad Inn Hotel and Entertainment Complex.
- Available On-Site Parking – There are 3,800 parking spaces available on-site (including 500 spaces in the unpaved northeast grass lot). Using the given vehicle occupancy of 2.0 persons per vehicle the site can handle an event up to 7,600 people.
- Available Off-Site Parking Spaces – The plan assumes 400 parking spaces available at Altru Hospital for all Alerus Center events needing off-site parking and 1,800 spaces available at UND for UND events. Other off-site parking locations may need to be identified for general events larger than 8400 attendees.
- Inbound Traffic – The plan shows a specific routing of incoming traffic, specified signage, barricades and cones, Alerus traffic control staff and police staff to aid in filling the on-site and off-site parking spaces as quickly and efficiently as possible.
- Outbound Traffic – The plan shows a specific routing of traffic exiting each lot, specified signage, barricades and cones, Alerus staff and police staff to aid in emptying the lots as quickly and efficiently as possible. The interim plan includes an estimated amount of time to empty the **full parking lot** at each access including the amount of time for the shuttles to return everyone to the off-site parking lots in comparison to the estimate of time it takes to currently empty the **full parking lot**. The figures showing the amount of time to empty the lots are attached to this summary.
- Event Costs – The plan shows that the cost for an event with 8,400 attendees will be \$7,084 and the cost for an event of 12,000 (UND football or large general event) will be \$24,848.00. An event between 8,400 and 12,000 attendees will cost between \$7,084 and \$24,848 depending on the number of shuttles needed.

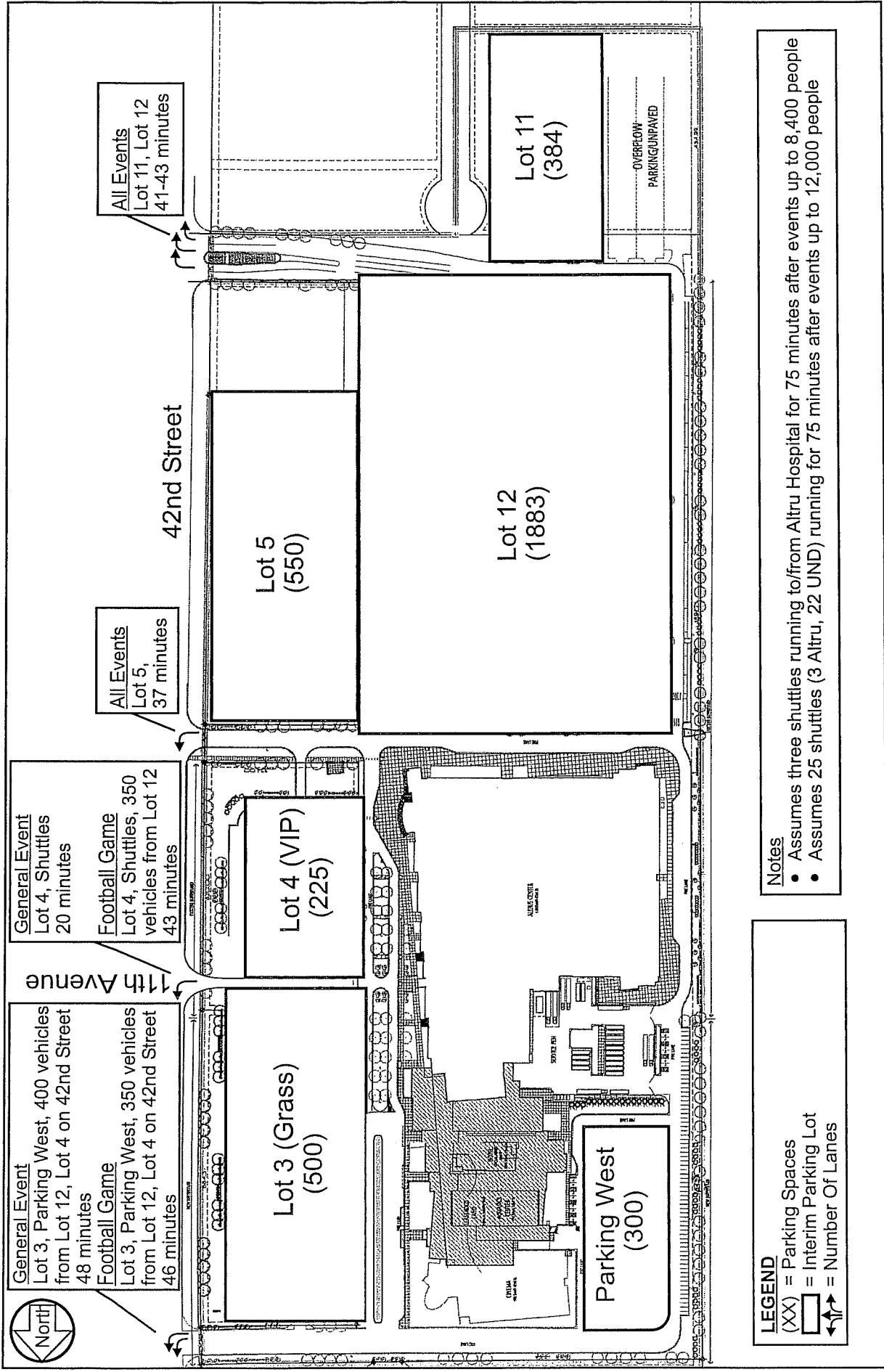


EXISTING SITE EXIT TIMES - FULL PARKING LOTS ON SITE

ALERUS CENTER EVENT TRAFFIC STUDY EXECUTIVE SUMMARY

Grand Forks - East Grand Forks Metropolitan Planning Organization

Figure ES-1



LEGEND
 (XX) = Parking Spaces
 [] = Interim Parking Lot
 \leftrightarrow = Number Of Lanes

Notes

- Assumes three shuttles running to/from Altru Hospital for 75 minutes after events up to 8,400 people
- Assumes 25 shuttles (3 Altru, 22 UND) running for 75 minutes after events up to 12,000 people



PLANNED SITE EXIT TIMES - FULL PARKING LOTS ON SITE

ALERUS CENTER EVENT TRAFFIC STUDY - EXECUTIVE SUMMARY
 Grand Forks - East Grand Forks Metropolitan Planning Organization

Figure ES-2